

# SALEM WOODS FIRE

By: Michael Farley

GIS/GGR320

Dr. Marcos Luna

December 6, 2007

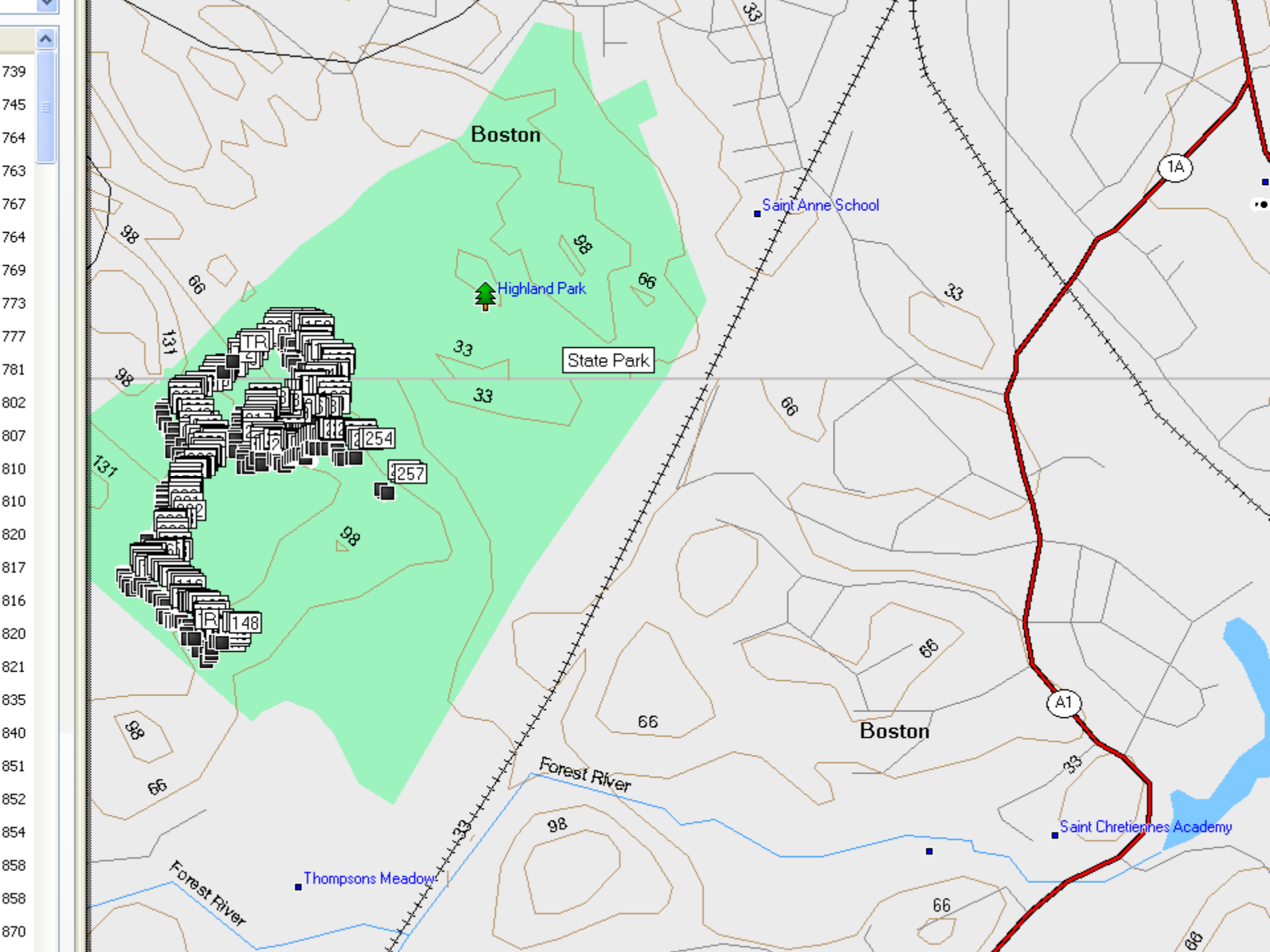
# Introduction/Objectives

- ▣ Collect data of Salem Fire/GPS points
- ▣ Map Salem Woods Fire
- ▣ Document the burn pattern

# Methods

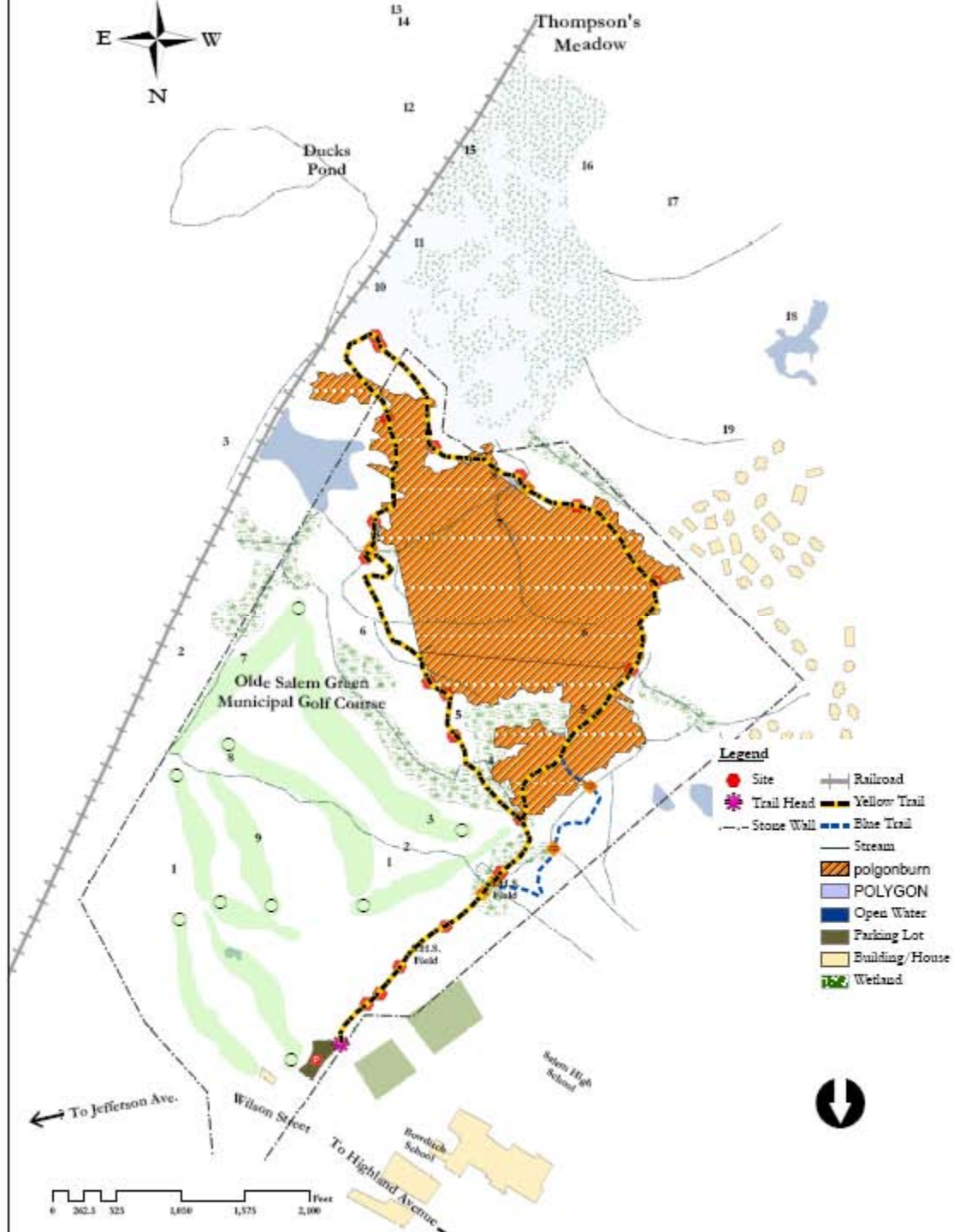
- ▣ Collected data with Garmin GPS unit
- ▣ Observed the burn lines along Salem Woods
- ▣ Enclosed perimeter of fire with collected waypoints
- ▣ Downloaded waypoints too computer
- ▣ Layered waypoints with existing map

User	Waypoint	42	29.739	70	54.557	42.49565	-70.90928333
User	Waypoint	42	29.741	70	54.558	42.49568333	-70.9093
User	Waypoint	42	29.743	70	54.557	42.49571667	-70.90928333
User	Waypoint	42	29.745	70	54.558	42.49575	-70.9093
User	Waypoint	42	29.748	70	54.56	42.4958	-70.90933333
User	Waypoint	42	29.749	70	54.559	42.49581667	-70.90931667
User	Waypoint	42	29.751	70	54.559	42.49585	-70.90931667
User	Waypoint	42	29.752	70	54.559	42.49586667	-70.90931667
User	Waypoint	42	29.752	70	54.563	42.49586667	-70.90938333
User	Waypoint	42	29.753	70	54.567	42.49588333	-70.90945
User	Waypoint	42	29.749	70	54.567	42.49581667	-70.90945
User	Waypoint	42	29.757	70	54.568	42.49595	-70.90946667
User	Waypoint	42	29.758	70	54.567	42.49596667	-70.90945
User	Waypoint	42	29.758	70	54.565	42.49596667	-70.90941667
User	Waypoint	42	29.756	70	54.561	42.49593333	-70.90935
User	Waypoint	42	29.759	70	54.557	42.49598333	-70.90928333
User	Waypoint	42	29.76	70	54.555	42.496	-70.90925
User	Waypoint	42	29.758	70	54.553	42.49596667	-70.90921667
User	Waypoint	42	29.756	70	54.554	42.49593333	-70.90923333
User	Waypoint	42	29.755	70	54.549	42.49591667	-70.90915
User	Waypoint	42	29.756	70	54.545	42.49593333	-70.90908333
User	Waypoint	42	29.758	70	54.545	42.49596667	-70.90908333
User	Waypoint	42	29.761	70	54.547	42.49601667	-70.90911667
User	Waypoint	42	29.761	70	54.541	42.49601667	-70.90901667
User	Waypoint	42	29.765	70	54.54	42.49608333	-70.909
User	Waypoint	42	29.767	70	54.542	42.49611667	-70.90903333
User	Waypoint	42	29.77	70	54.545	42.49616667	-70.90908333
User	Waypoint	42	29.769	70	54.549	42.49615	-70.90915
User	Waypoint	42	29.772	70	54.55	42.4962	-70.90916667
User	Waypoint	42	29.774	70	54.554	42.49623333	-70.90923333
User	Waypoint	42	29.771	70	54.558	42.49618333	-70.9093
User	Waypoint	42	29.772	70	54.559	42.4962	-70.90931667
User	Waypoint	42	29.772	70	54.562	42.4962	-70.90936667
User	Waypoint	42	29.772	70	54.566	42.4962	-70.90943333
User	Waypoint	42	29.77	70	54.57	42.49616667	-70.9095
User	Waypoint	42	29.768	70	54.572	42.49613333	-70.90953333
User	Waypoint	42	29.768	70	54.574	42.49613333	-70.90956667
User	Waypoint	42	29.765	70	54.576	42.49608333	-70.9096
User	Waypoint	42	29.756	70	54.577	42.49593333	-70.90961667
User	Waypoint	42	29.752	70	54.581	42.49586667	-70.90968333
User	Waypoint	42	29.751	70	54.589	42.49585	-70.90981667
User	Waypoint	42	29.746	70	54.591	42.49576667	-70.90985
User	Waypoint	42	29.741	70	54.592	42.49568333	-70.90986667
User	Waypoint	42	29.735	70	54.596	42.49558333	-70.90993333
User	Waypoint	42	29.735	70	54.598	42.49558333	-70.90996667
User	Waypoint	42	29.734	70	54.606	42.49556667	-70.9101
User	Waypoint	42	29.738	70	54.607	42.49563333	-70.91011667
User	Waypoint	42	29.742	70	54.609	42.4957	-70.91015
User	Waypoint	42	29.741	70	54.614	42.49568333	-70.91023333
User	Waypoint	42	29.738	70	54.618	42.49563333	-70.9103
User	Waypoint	42	29.735	70	54.622	42.49558333	-70.91036667
User	Waypoint	42	29.732	70	54.629	42.49553333	-70.91048333
User	Waypoint	42	29.731	70	54.637	42.49551667	-70.91061667
User	Waypoint	42	29.722	70	54.635	42.49536667	-70.91058333
User	Waypoint	42	29.716	70	54.634	42.49526667	-70.91056667
User	Waypoint	42	29.715	70	54.641	42.49525	-70.91058333









# Results/Conclusion

- ▣ A enclosed spatial view of the fire's extent
- ▣ The points may help learn about fire prevention
- ▣ The enclosed area of the fire will give a better understanding to the re-growth of the area